



REGIONAL FORUM

People Water and Land – *Te Mana o te Tangata, te Wai, te Whenua*

The Kaituitui Technical Team

25 July 2019

Rhiannon Suter



People, Water and Land Programme



People Water and Land – *Te Mana o te Tangata, te Wai, te Whenua*

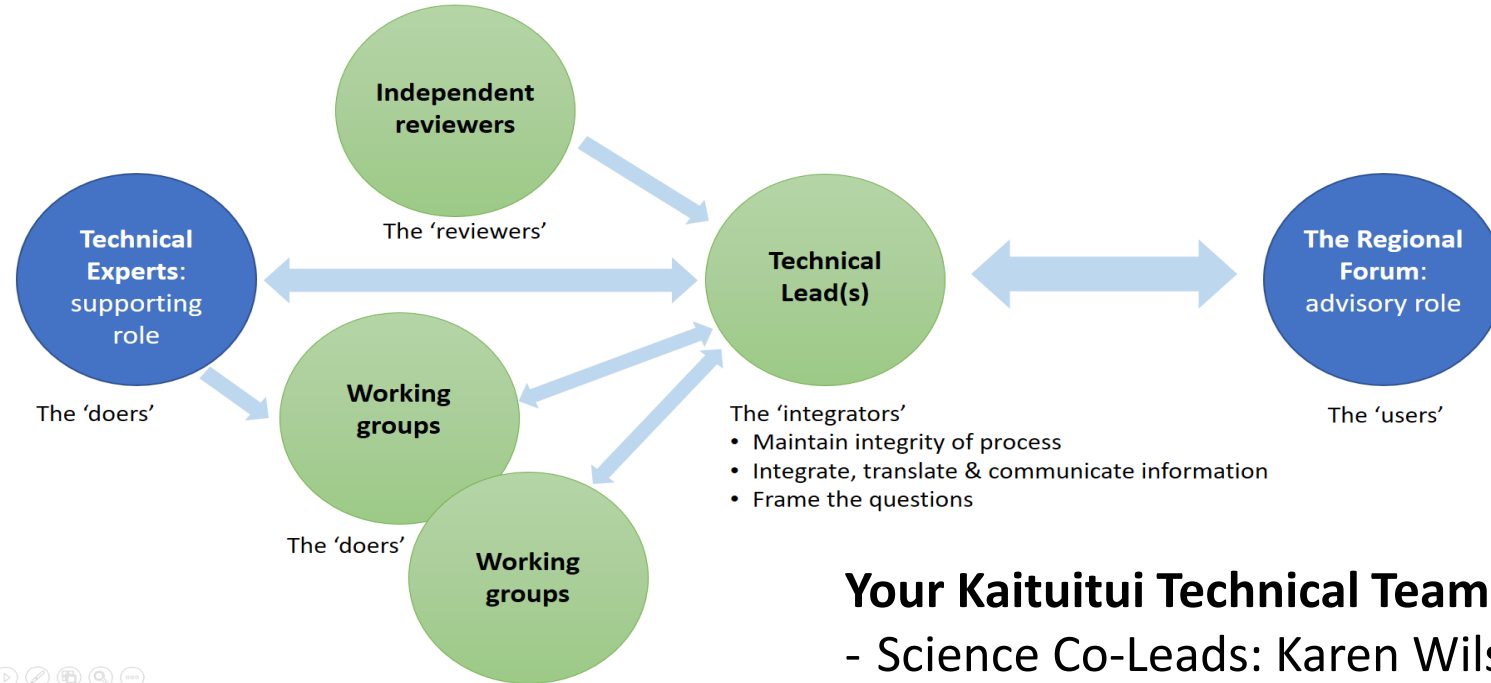


Core Project Team

- Regional Forum Lead – Rhiannon
- Administration/ logistics – Tania
- Communications – Adrienne
- Programme manager/ governance – Bonny
- Iwi lead – Mike



Technical support



Your Kaititui Technical Team:

- Science Co-Leads: Karen Wilson and Ned Norton
- Cultural Lead: Mike Trent
- Policy and Planning Lead: Anastazia Raymond
- Operations Lead: Karl Erikson

Individuals, whether private residents, farmers and other business owners or industry executives take investment, business practice, consumption or voting decisions which impact on freshwater outcomes.

What contexts influence those decisions?

Regulatory environment:

National

- Local Government Act 2002
- Resource Management Act 1991
- Part 3 – Use restrictions:
 1. Land
 2. Lake and river beds
 3. Water quantity
 4. Environmental quality – land
 5. Environmental quality – air
 6. Environmental quality – water
- National Policy Statement on Freshwater Management (NPSFM)
- National Policy Statement on Coastal Management (estuaries)

Regulatory environment:

Regional

- Southland Water and Land Plan
- People, Water and Land programme → plan change
- Regional Plans

Personal values

Decision-maker

- Business owner – e.g. rural/ industry
- Resident
- Other

The market

- Price
- Consumer values forward signals – e.g. consumer advocacy/ agenda
- International “standards”
- Export market regulatory requirements
- Industry/ peer practice & guidance

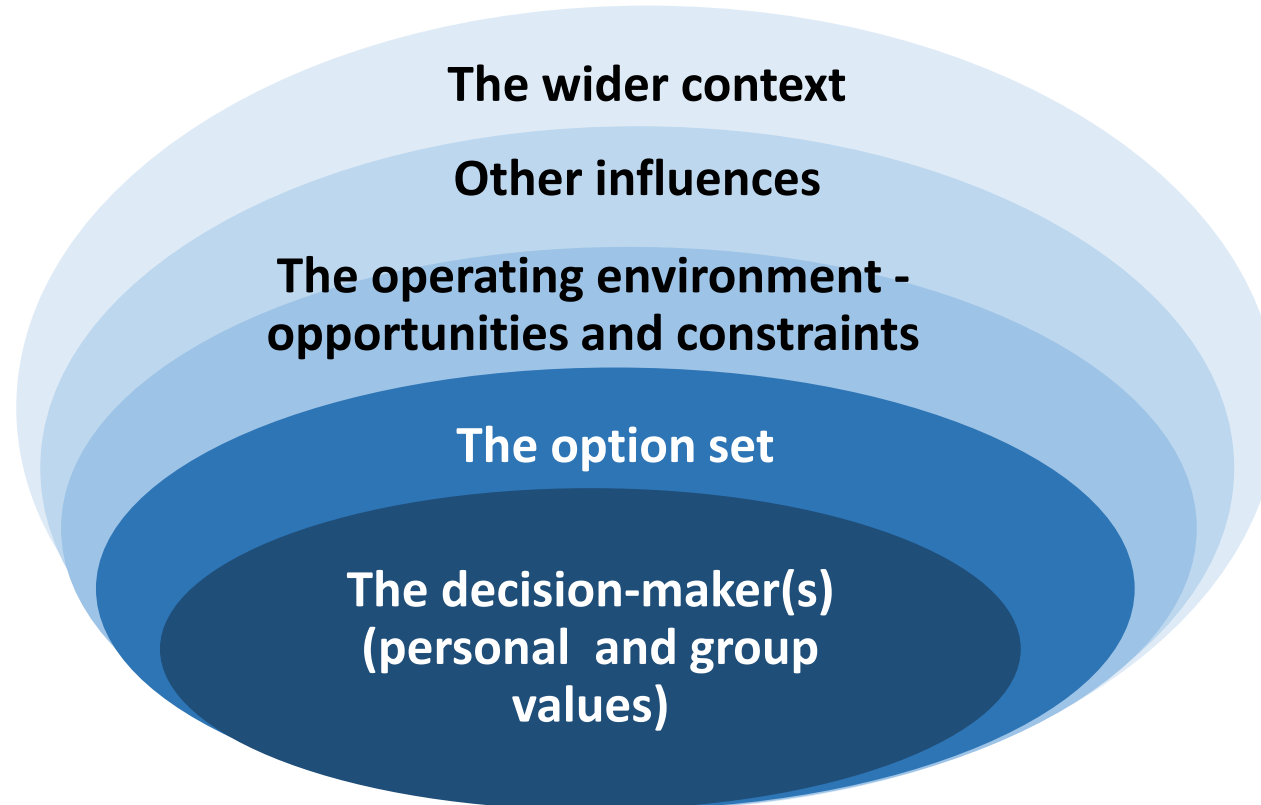
Social/ community

- Community values
- Peer pressure

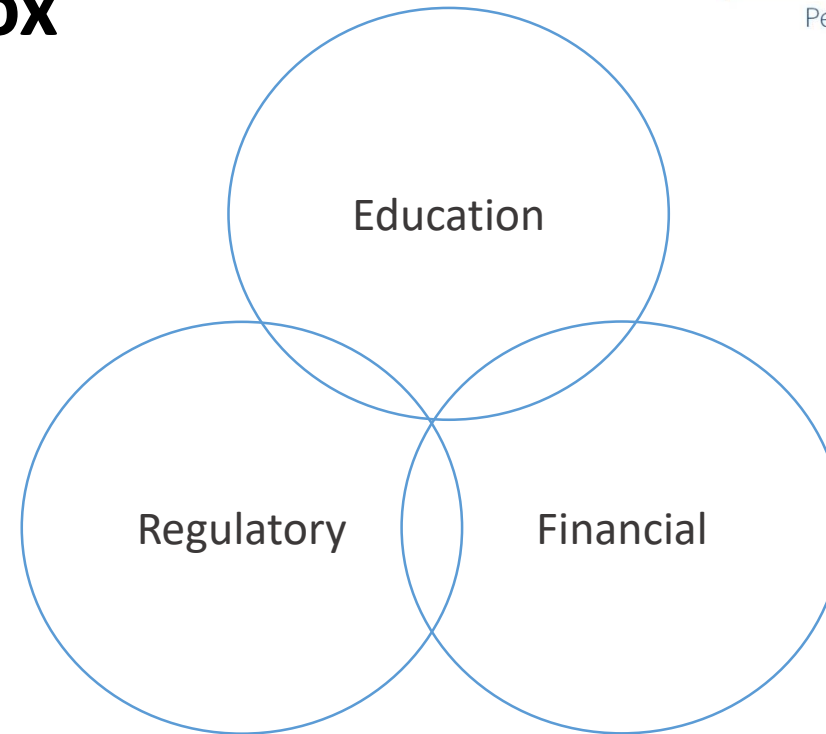
The physical environment

Geophysical characteristics – Land ‘improvements’ – diffuse/ point discharge

Layers of the decision making onion



The Policy Toolbox



Assessment methods: Science, economic, Maturanga Maori and other methods to inform and assess appropriateness, effectiveness and efficiency of proposed options mix from the policy toolbox

Questions?